

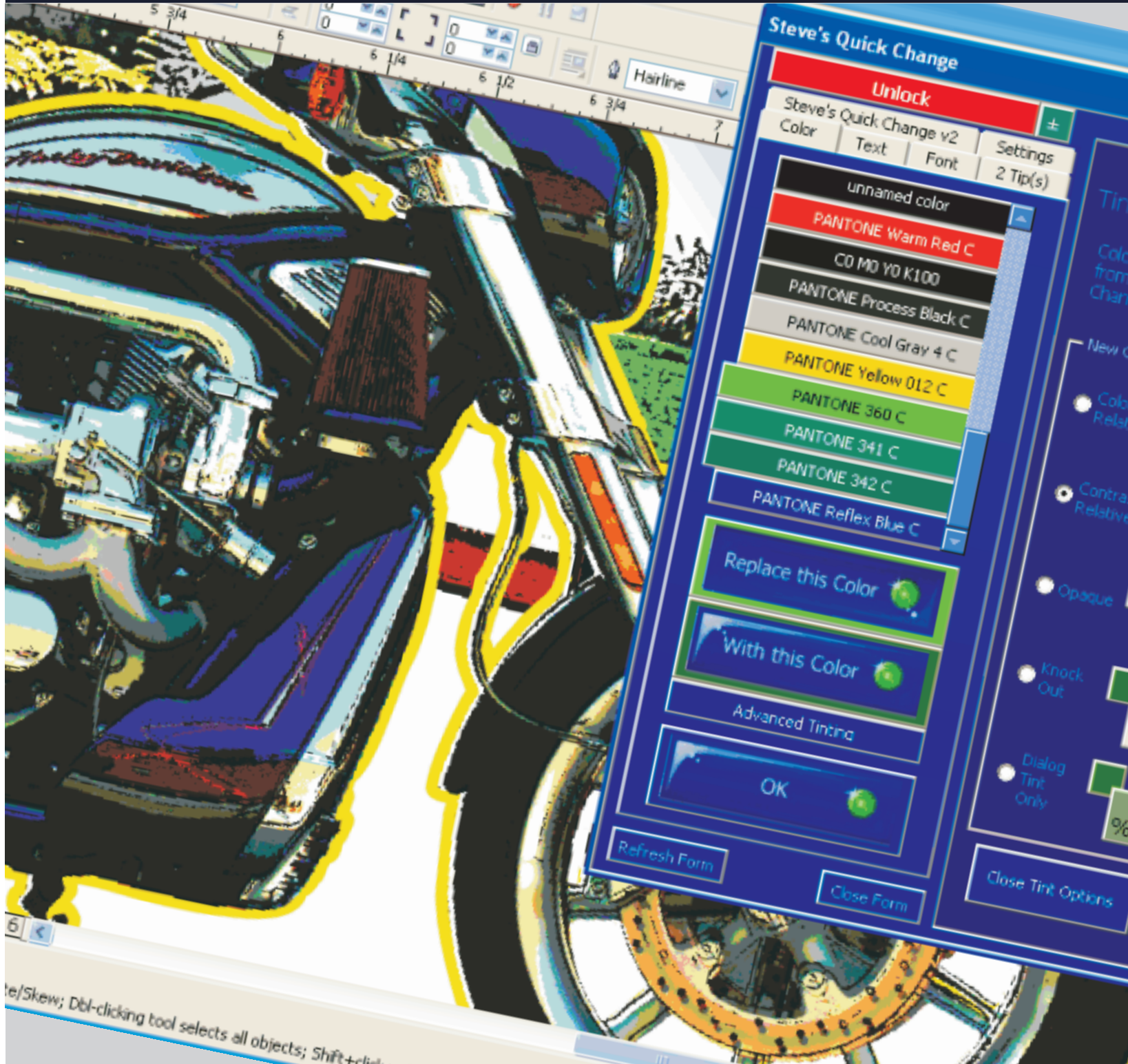
# Steve Yates

GRAPHICS & GRAPHIC AUTOMATION

# Quick Change

Fast Spot Color, Text and Font Editing

## User's Manual



te/Skew; Dbl-clicking tool selects all objects; Shift+cl...



*Thank you for using Quick Change the fast spot color, text and font editor for CorelDRAW x3™.*

Quick Change has been in use for years privately and we hope you get as much use out of it as we have. Over the years it's been re-worked, re-coded and ultimately re-packaged for use on other computer systems and a broader range of uses. The gray area on the opening screen **a** displays the latest updates on Quick Change as they come out as well as new products available from Steve Yates Graphics.

Quick Change was created by a screen print artist for color reduction and spot color conversion and for template editing of text and fonts. Eventually, Quick Change was modified to read text and font information into Quick Change making any existing design a CorelDRAW template.

While this manual attempts to educate you on how to use Quick Change, Quick Change itself is its own best teacher. Every control has a "tool tip". Tool Tips are text explanations of what the controls do triggered by hovering the mouse cursor over the control. On the left hand side of the "...changer" pages are example screen shots of before and after and every change is added to the bottom of the change sequence. The previous pages change screen shots are ghosted as the changes progress.

We're proud to share this time saving application with you and hope that Quick Change limits your level of CorelDRAW frustrations and helps you to increase your bottom line as well if not more than it did ours.

*Enjoy!*

## TIP



In the right/top corner of every screen of Quick Change there's a green button that will minimize QC down to the title bar.

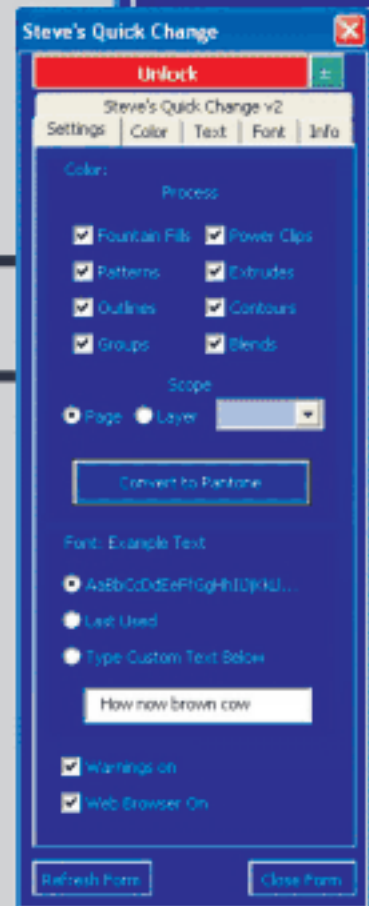
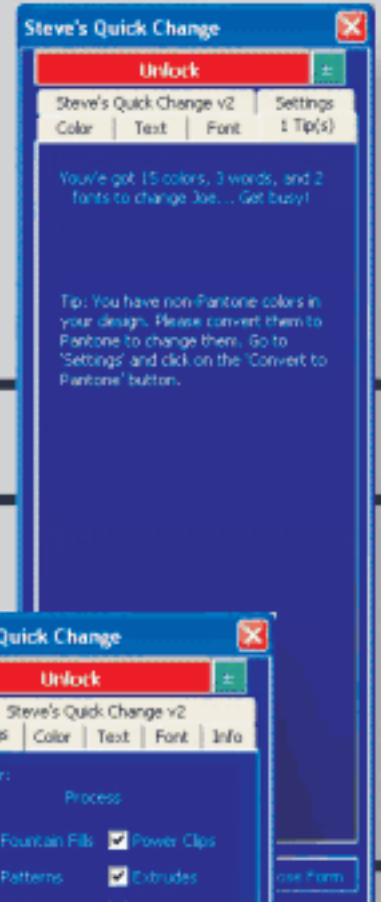
While Quick Change is a great tool for changing and converting spot colors, text and fonts, it can also make suggestions about your designs. In fact, the Quick Change tips are ever growing. Your tips and suggestions help grow Quick Change's ability to help you and others create usable, color separate-able designs. Also Quick Change is customizable with a settings tab that's easy to find.

## Information/Tips

The Info/Tips tab displays information about your design. The top shows you how many color, words and fonts Quick Design found in your design. Quick Change also can make suggestions according to what it finds in your design. This is being updated all the time and suggestions are welcome.

## Settings

Quick Change comes with a handful of customizable settings. Don't want to waste your time with power clips or blends that don't apply to the changes in your design? Uncheck the power clip and blend from the settings screen and Quick Change will ignore any that are there speeding up the color changing process. Need to see what the font changes will look like with your custom text? Edit the "Font Example Text" to see your words in the display of your new changed font. Personalize Quick Change to suit your work habits.



## Color Changer



figure 1

The Color Changer is a tool that changes one or multiple colors into another color and is smart enough to know how to either match tints from, or create tints out of contrasting colors of the shape it's converting from as well as opaque the tints, knock them out or let you custom tint your changed colors. It was made for designs with multiple shapes that would take forever "tabbing through" an 187 color/1582 shape design and making it down to a

manageable set of spot colors or just changing the colors in a design to your customer's colors like figure 1.

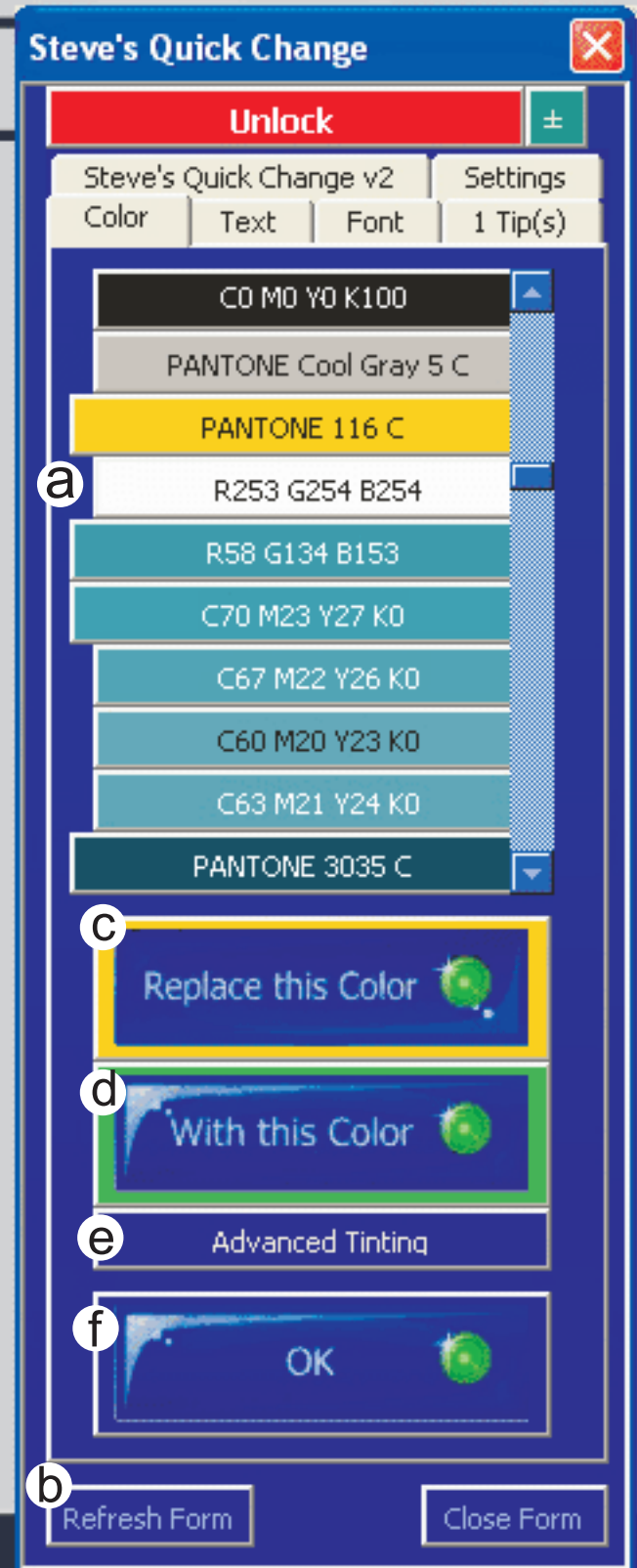
You select colors from the Quick Change color palette. **a** This palette is created from your design when you start Quick Design or click the "Refresh Form" button. **b** The selected colors will move to the left so you can see that they're selected and the last color selected will outline the "Replace this Color" box **c** with a green light on the button (telling you that one or more colors are selected). Next, choose your replacement color with the "Get Replacement" button. The replace color with outline the button, the red light will turn green and the text on the button will change to "With this color". **d** After selecting any tinting preferences **e** (explained on the next page), hit "OK" **f** to make your changes.

Wallah! Your changed!

## User Tip

*"Quick Change is great for switching out colors on the fly. Especially if your customer is hovering over you shoulder".*

Dennis Bruso





## Color Changer

(continued)

### Advanced Tinting



Advanced Tinting gives you total control over the way you change colors and their tints. You decide whether you want to copy the same tint values color to color by selecting "Color Relative", **a** copy the contrast

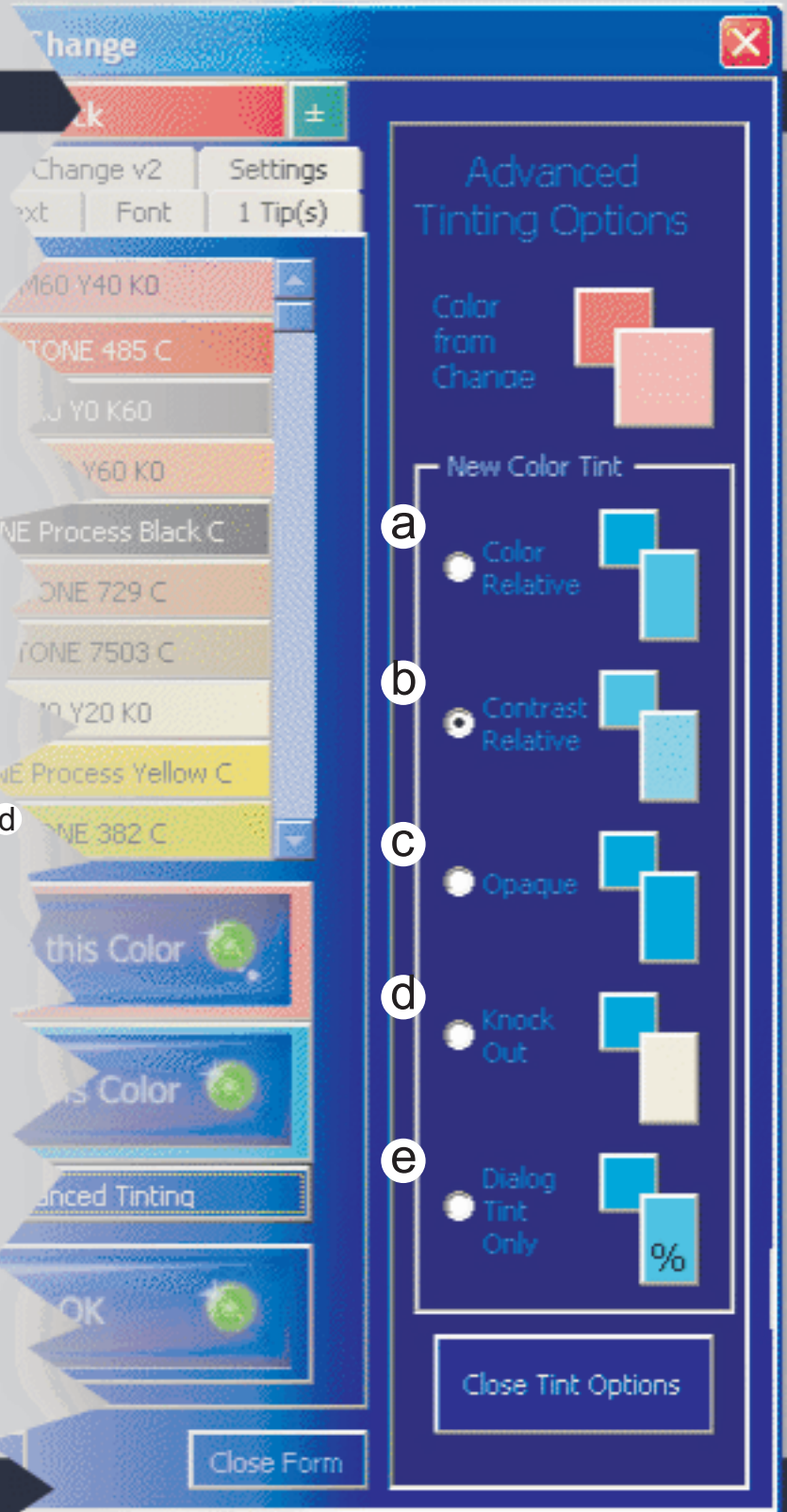
between the two colors by selecting "Contrast Relative", **b** Black out with "Opaque" **c** or "Knock Out" **d** to white all together, Advanced tinting gives you control over your designs tinting. You can even change to your own custom tint values via the Color dialog box. **e**

Advanced Tinting is a very powerful feature that you'll find more and more uses for and will prove to be a huge time saver the more you use it.

## User Tip

*"Contrast Relative tinting is perfect for changing a bunch of colors into one. And with Quick Change's ability to change more than one color at a time, it's fast and easy to convert a multi colored image into a one color shirt design"*

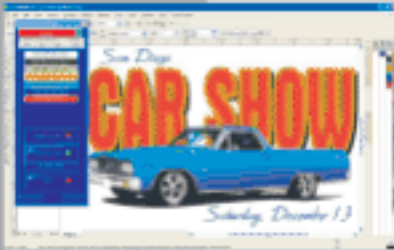
Ryan Melcher



## Text Changer



The Text Changer is a great tool for changing graphically enhanced editable words or multiples of the same word in a design.



In the example to the left, we changed the text in the design from "San Diego", "CAR SHOW," "Saturday, December 13" to "Orange County," "BLUE CAR", "Saturday, January 26". Because the "San Diego" and "Saturday, December 13" only use one word to create their individual graphics they're easily editable with traditional CorelDRAW text tools but the "CAR SHOW" graphic would require multiple edits to achieve the change.



Quick Change not only allows you to change all the elements of those multiple word graphics but allows you to change their case at the same time. In fact, if you need to change "car show" to "CAR SHOW" or "Car Show" or even "cAR sHOW" you can do it in just by clicking selecting the word, **a** selecting the chosen case button **c** and clicking "OK". **d**

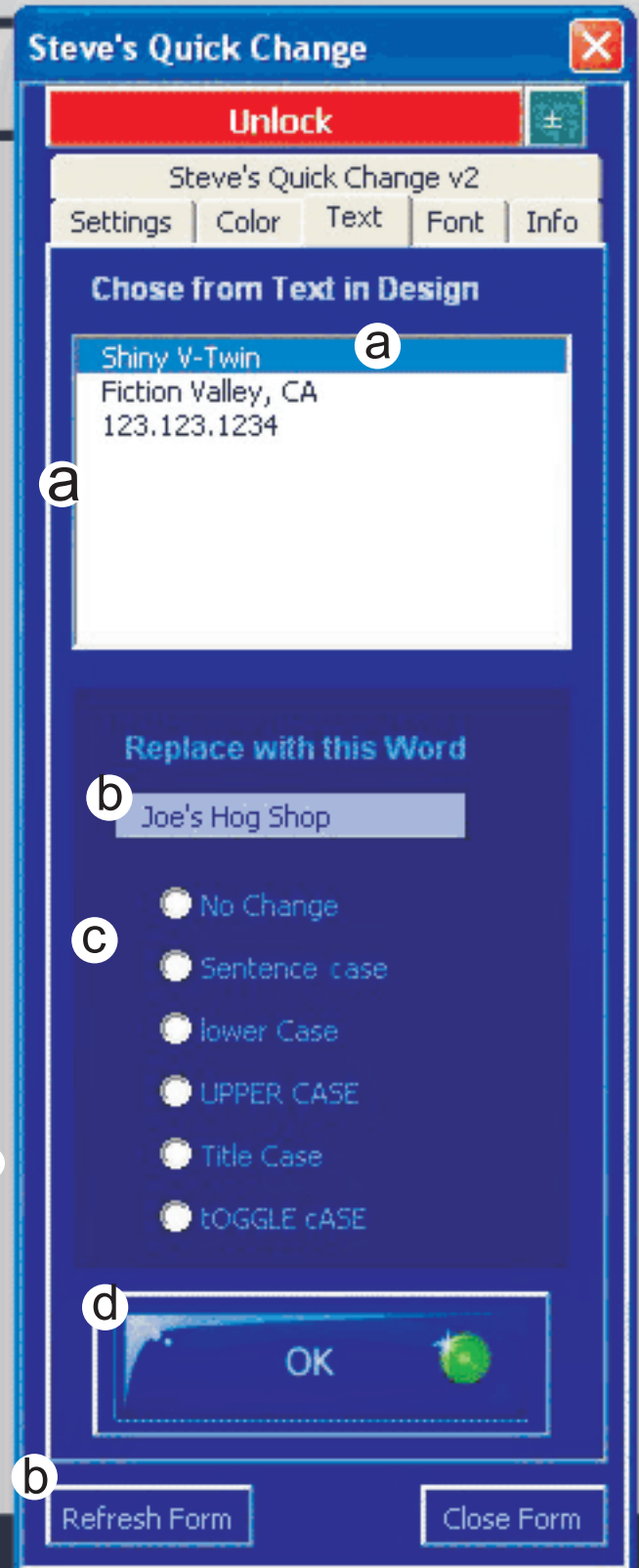
To change One word to another, select the word **a** Type in the replacement word **b** select any case changing **c** and click "OK". **d**

Quick and easy!

## User Tip

*"Don't be afraid to create individual custom brochures and flyers. Your customer will be impressed and with QC, you'll have used little time to produce them!"*

Lee Doughty





## Font Changer



Font Changer is great for changing multiples of the same font and like the Text Changer was created to change a whole graphic word created out of stacked, layered or power clipped text objects that create a shadow, emboss, ghosted or whatever kind of text graphic you can dream of. Where before you may have limited your creativity for the sake of production, now you can add as many text objects on top of each other, to the side, across the page, power clipped or whatever you can dream of and not be concerned about the amount of time it takes to edit. Quick Change Does it with three clicks...

Select the font to change in the box on the top. **a** Select a font to change to in the next box down. **b** Click "OK" **c** and your fonts are changed. It's really that easy. If there's any bold, italics or underlines in the font family, you can select and use them as well.

Selecting fonts is way easier in Quick Change than CorelDRAW itself and speeds up the searching/selecting process.

### User Tip

"Fonts are faster and easier to select with QC".

Dennis Bruso



Notes:



Code: \_\_\_\_\_

Key: \_\_\_\_\_

# Quick Change